

APPROVALS

KITTITAS COUNTY DEPARTMENT OF PUBLIC WORKS
 ENGINEER: *[Signature]* THIS DAY OF *Sept* A.D. 2012

KITTITAS COUNTY HEALTH DEPARTMENT
 HEALTH OFFICER: *[Signature]* THIS DAY OF *Sept* A.D. 2012

KITTITAS COUNTY PLANNING DEPARTMENT
 PLANNING COMMISSION: *[Signature]* THIS DAY OF *Sept* A.D. 2012

KITTITAS COUNTY PLANNING DEPARTMENT
 PLANNING COMMISSION: *[Signature]* THIS DAY OF *Sept* A.D. 2012

I HEREBY CERTIFY THAT THE PASS LIFE AT THE VILLAGE DEVELOPMENT, HAS BEEN EXAMINED BY ME AND I FIND THAT THE SEWER AND WATER SYSTEM HEREIN SHOWN ON THIS MAP MEETS ALL REQUIREMENTS OF THE KITTITAS COUNTY PLANNING COMMISSION.

DATED THIS *4th* DAY OF *Sept* A.D. 2012
[Signature]
 KITTITAS COUNTY PLANNING DEPARTMENT

I HEREBY CERTIFY THAT THE TAXES AND ASSESSMENTS ARE PAID FOR THE PRECEDING YEARS AND FOR THIS YEAR IN FULL, THAT IT IS NOW TO BE FILED.

DATED THIS *4th* DAY OF *Sept* A.D. 2012
[Signature]
 KITTITAS COUNTY PLANNING DEPARTMENT

I HEREBY CERTIFY THAT THE PASS LIFE AT THE VILLAGE DEVELOPMENT, HAS BEEN EXAMINED BY ME AND I FIND THAT THE SEWER AND WATER SYSTEM HEREIN SHOWN ON THIS MAP MEETS ALL REQUIREMENTS OF THE KITTITAS COUNTY PLANNING COMMISSION.

DATED THIS *13th* DAY OF *Sept* A.D. 2012
[Signature]
 KITTITAS COUNTY PLANNING DEPARTMENT

I HEREBY CERTIFY THAT THE PASS LIFE AT THE VILLAGE DEVELOPMENT, HAS BEEN EXAMINED BY ME AND I FIND THAT THE SEWER AND WATER SYSTEM HEREIN SHOWN ON THIS MAP MEETS ALL REQUIREMENTS OF THE KITTITAS COUNTY PLANNING COMMISSION.

DATED THIS *18th* DAY OF *Sept* A.D. 2012
[Signature]
 KITTITAS COUNTY PLANNING DEPARTMENT

I HEREBY CERTIFY THAT THE PASS LIFE AT THE VILLAGE DEVELOPMENT, HAS BEEN EXAMINED BY ME AND I FIND THAT THE SEWER AND WATER SYSTEM HEREIN SHOWN ON THIS MAP MEETS ALL REQUIREMENTS OF THE KITTITAS COUNTY PLANNING COMMISSION.

DATED THIS *18th* DAY OF *Sept* A.D. 2012
[Signature]
 KITTITAS COUNTY PLANNING DEPARTMENT

I HEREBY CERTIFY THAT THE PASS LIFE AT THE VILLAGE DEVELOPMENT, HAS BEEN EXAMINED BY ME AND I FIND THAT THE SEWER AND WATER SYSTEM HEREIN SHOWN ON THIS MAP MEETS ALL REQUIREMENTS OF THE KITTITAS COUNTY PLANNING COMMISSION.

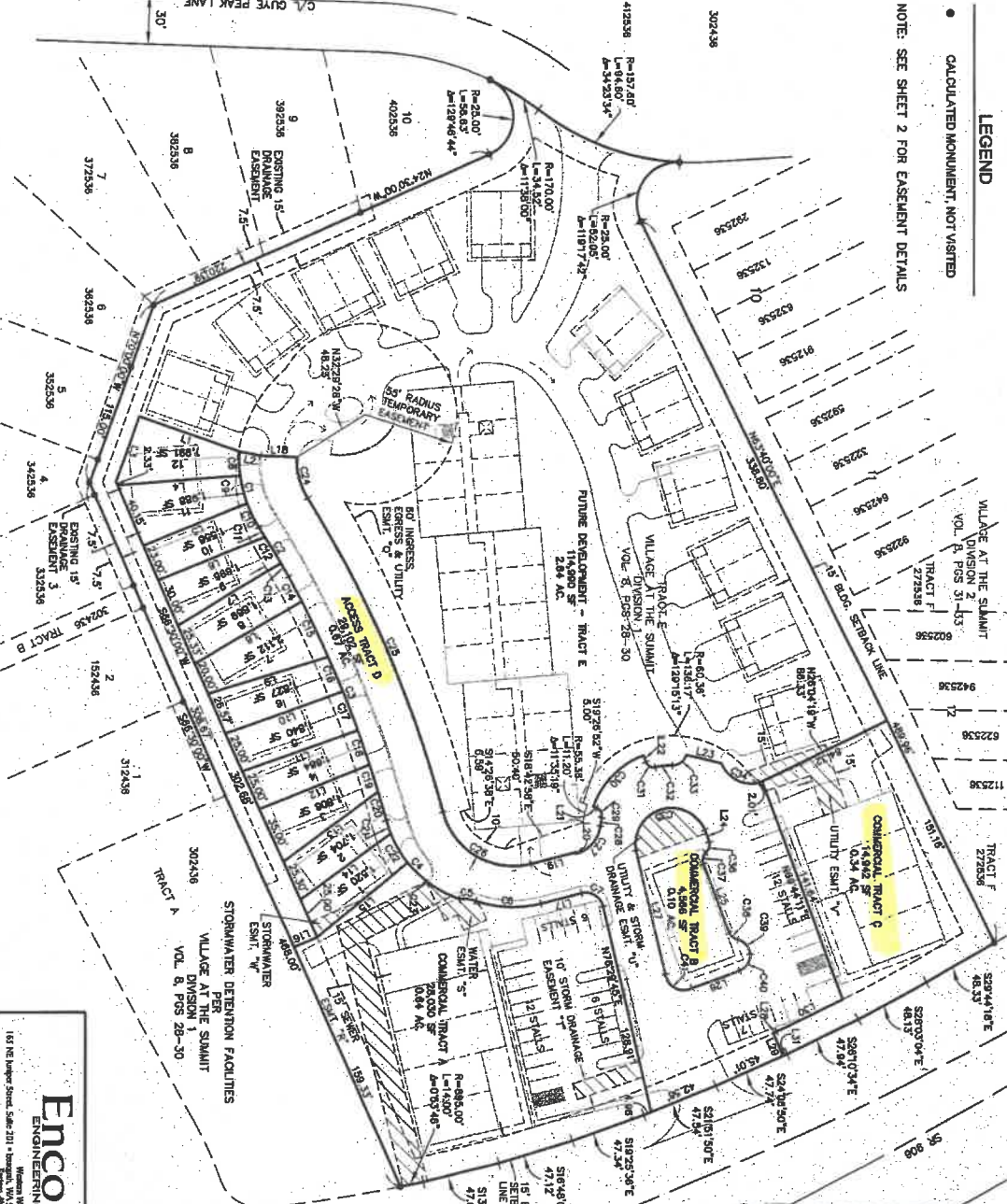
DATED THIS *18th* DAY OF *Sept* A.D. 2012
[Signature]
 KITTITAS COUNTY PLANNING DEPARTMENT



RECORDED THIS *12th* DAY OF *Sept* 2012 AT 11:41 AM
 DAVID P. NELSON
 Recorder of Kittitas County, Washington

DAVID P. NELSON
 Deputy County Auditor

DAVID P. NELSON
 Certificate No. 18092



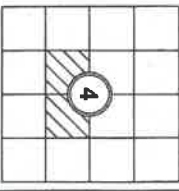
THE PASS LIFE AT THE VILLAGE AT THE SUMMIT, DIV. 3, PHASE 1
 A PLANNED UNIT DEVELOPMENT
 A PORTION OF THE SOUTH 1/2 OF SECTION 4,
 TOWNSHIP 22 NORTH, RANGE 11 EAST, W.1/4,
 KITTITAS COUNTY, WASHINGTON



RECEIVED
 FEB 11 2020
 Kittitas Co. CDS



INDEX LOCATION
 SEC. 4 T. 22N. R. 11E W.1/4



Encompass
 ENGINEERING & SURVEYING
 163 NE Harbor Street, Suite 201 • Bellingham, WA 98207 • Phone: (360) 392-0830 • Fax: (360) 391-1055
 100 East 2nd Street • Ch. Binn, WA 99222 • Phone: (509) 674-7431 • Fax: (509) 674-7419

THE PASS LIFE AT THE VILLAGE AT THE SUMMIT, DIV. 3, PHASE 1
 A PLANNED UNIT DEVELOPMENT
 A PORTION OF THE SOUTH 1/2 OF SECTION 4,
 TOWNSHIP 22 NORTH, RANGE 11 EAST, W.1/4,
 KITTITAS COUNTY, WASHINGTON

OWN BY: G. WEISER
 CHD BY: D. NELSON
 DATE: 7/2012
 SCALE: 1" = 50'
 JOB NO.: 11103
 SHEET: 1 OF 3

18-54

THE PASS LINE AT THE VILLAGE AT THE SUMMIT, DIV. 3, PHASE 1
 A PLANNED UNIT DEVELOPMENT
 A PORTION OF THE SOUTH 1/2 OF SECTION 4,
 TOWNSHIP 22 NORTH, RANGE 11 EAST, T.22N., R.11E.,
 KITTITAS COUNTY, WASHINGTON

09/18/2012 09:49:24 PM V: 12 P: 55 201209190035
 11103
 Kittitas County Auditor
 Page 2 of 3

LOT & TRACT TABLES

LINE	BEARING	DISTANCE
L1	N17°34'11"W	64.70
L2	S11°10'06"E	42.29
L3	S11°10'06"E	74.83
L4	N02°22'41"W	67.42
L5	S22°22'40"E	66.83
L6	N22°22'40"E	71.76
L7	S31°47'01"W	73.81
L8	S17°28'54"E	74.43
L9	S80°17'28"W	72.63
L10	N42°22'20"E	70.67
L11	S47°20'30"E	70.60
L12	N48°45'32"E	67.70
L13	S43°28'53"W	70.74
L14	S23°29'00"E	18.00
L15	N1°14'10"E	28.66
L16	N1°14'10"E	28.66
L17	S17°28'54"E	1.00
L18	N17°28'54"E	2.28
L19	S17°28'54"E	4.26
L20	S17°28'54"E	21.94
L21	S88°24'11"W	7.87
L22	S88°24'11"W	4.47
L23	N17°30'00"E	2.30
L24	S17°30'00"E	2.30
L25	N68°30'00"E	18.00
L26	S68°30'00"E	18.00
L27	S24°00'00"E	44.68
L28	S24°00'00"E	2.73

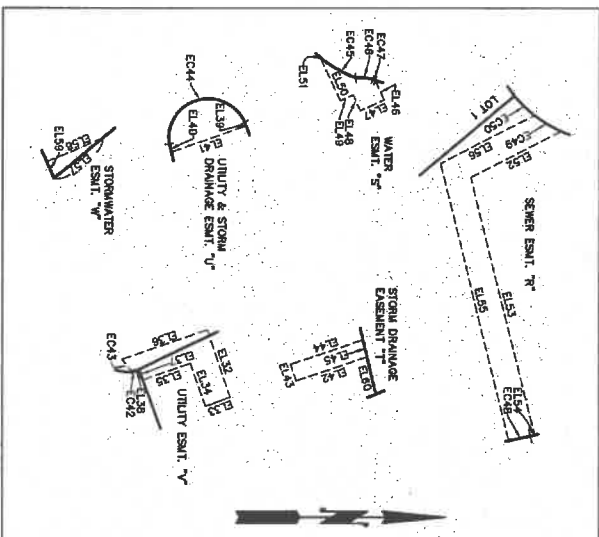
LINE	BEARING	DISTANCE	DELTA
C1	44.10'	77.92'	35.31'48"
C2	44.10'	77.92'	35.31'48"
C3	47.85'	20.00'	28.28'32"
C4	47.85'	20.00'	28.28'32"
C5	47.85'	20.00'	28.28'32"
C6	47.85'	20.00'	28.28'32"
C7	47.85'	20.00'	28.28'32"
C8	47.85'	20.00'	28.28'32"
C9	47.85'	20.00'	28.28'32"
C10	47.85'	20.00'	28.28'32"
C11	47.85'	20.00'	28.28'32"
C12	47.85'	20.00'	28.28'32"
C13	47.85'	20.00'	28.28'32"
C14	47.85'	20.00'	28.28'32"
C15	47.85'	20.00'	28.28'32"
C16	47.85'	20.00'	28.28'32"
C17	47.85'	20.00'	28.28'32"
C18	47.85'	20.00'	28.28'32"
C19	47.85'	20.00'	28.28'32"
C20	47.85'	20.00'	28.28'32"
C21	47.85'	20.00'	28.28'32"
C22	47.85'	20.00'	28.28'32"
C23	47.85'	20.00'	28.28'32"
C24	47.85'	20.00'	28.28'32"
C25	47.85'	20.00'	28.28'32"
C26	47.85'	20.00'	28.28'32"
C27	47.85'	20.00'	28.28'32"
C28	47.85'	20.00'	28.28'32"
C29	47.85'	20.00'	28.28'32"
C30	47.85'	20.00'	28.28'32"
C31	47.85'	20.00'	28.28'32"
C32	47.85'	20.00'	28.28'32"
C33	47.85'	20.00'	28.28'32"
C34	47.85'	20.00'	28.28'32"
C35	47.85'	20.00'	28.28'32"
C36	47.85'	20.00'	28.28'32"
C37	47.85'	20.00'	28.28'32"
C38	47.85'	20.00'	28.28'32"
C39	47.85'	20.00'	28.28'32"
C40	47.85'	20.00'	28.28'32"
C41	47.85'	20.00'	28.28'32"

EASEMENT TABLES

LINE	BEARING	DISTANCE
E1.1	S17°30'00"E	18.00
E1.2	S17°30'00"E	18.00
E1.3	S17°30'00"E	18.00
E1.4	S17°30'00"E	18.00
E1.5	S17°30'00"E	18.00
E1.6	S17°30'00"E	18.00
E1.7	S17°30'00"E	18.00
E1.8	S17°30'00"E	18.00
E1.9	S17°30'00"E	18.00
E1.10	S17°30'00"E	18.00
E1.11	S17°30'00"E	18.00
E1.12	S17°30'00"E	18.00
E1.13	S17°30'00"E	18.00
E1.14	S17°30'00"E	18.00
E1.15	S17°30'00"E	18.00
E1.16	S17°30'00"E	18.00
E1.17	S17°30'00"E	18.00
E1.18	S17°30'00"E	18.00
E1.19	S17°30'00"E	18.00
E1.20	S17°30'00"E	18.00
E1.21	S17°30'00"E	18.00
E1.22	S17°30'00"E	18.00
E1.23	S17°30'00"E	18.00
E1.24	S17°30'00"E	18.00
E1.25	S17°30'00"E	18.00
E1.26	S17°30'00"E	18.00
E1.27	S17°30'00"E	18.00
E1.28	S17°30'00"E	18.00
E1.29	S17°30'00"E	18.00
E1.30	S17°30'00"E	18.00
E1.31	S17°30'00"E	18.00
E1.32	S17°30'00"E	18.00
E1.33	S17°30'00"E	18.00
E1.34	S17°30'00"E	18.00
E1.35	S17°30'00"E	18.00
E1.36	S17°30'00"E	18.00
E1.37	S17°30'00"E	18.00
E1.38	S17°30'00"E	18.00
E1.39	S17°30'00"E	18.00
E1.40	S17°30'00"E	18.00
E1.41	S17°30'00"E	18.00
E1.42	S17°30'00"E	18.00
E1.43	S17°30'00"E	18.00
E1.44	S17°30'00"E	18.00
E1.45	S17°30'00"E	18.00
E1.46	S17°30'00"E	18.00
E1.47	S17°30'00"E	18.00
E1.48	S17°30'00"E	18.00
E1.49	S17°30'00"E	18.00
E1.50	S17°30'00"E	18.00
E1.51	S17°30'00"E	18.00
E1.52	S17°30'00"E	18.00
E1.53	S17°30'00"E	18.00
E1.54	S17°30'00"E	18.00
E1.55	S17°30'00"E	18.00
E1.56	S17°30'00"E	18.00
E1.57	S17°30'00"E	18.00
E1.58	S17°30'00"E	18.00
E1.59	S17°30'00"E	18.00
E1.60	S17°30'00"E	18.00

LINE	BEARING	DISTANCE	DELTA
E2.1	44.10'	77.92'	35.31'48"
E2.2	44.10'	77.92'	35.31'48"
E2.3	47.85'	20.00'	28.28'32"
E2.4	47.85'	20.00'	28.28'32"
E2.5	47.85'	20.00'	28.28'32"
E2.6	47.85'	20.00'	28.28'32"
E2.7	47.85'	20.00'	28.28'32"
E2.8	47.85'	20.00'	28.28'32"
E2.9	47.85'	20.00'	28.28'32"
E2.10	47.85'	20.00'	28.28'32"
E2.11	47.85'	20.00'	28.28'32"
E2.12	47.85'	20.00'	28.28'32"
E2.13	47.85'	20.00'	28.28'32"
E2.14	47.85'	20.00'	28.28'32"
E2.15	47.85'	20.00'	28.28'32"
E2.16	47.85'	20.00'	28.28'32"
E2.17	47.85'	20.00'	28.28'32"
E2.18	47.85'	20.00'	28.28'32"
E2.19	47.85'	20.00'	28.28'32"
E2.20	47.85'	20.00'	28.28'32"
E2.21	47.85'	20.00'	28.28'32"
E2.22	47.85'	20.00'	28.28'32"
E2.23	47.85'	20.00'	28.28'32"
E2.24	47.85'	20.00'	28.28'32"
E2.25	47.85'	20.00'	28.28'32"
E2.26	47.85'	20.00'	28.28'32"
E2.27	47.85'	20.00'	28.28'32"
E2.28	47.85'	20.00'	28.28'32"
E2.29	47.85'	20.00'	28.28'32"
E2.30	47.85'	20.00'	28.28'32"
E2.31	47.85'	20.00'	28.28'32"
E2.32	47.85'	20.00'	28.28'32"
E2.33	47.85'	20.00'	28.28'32"
E2.34	47.85'	20.00'	28.28'32"
E2.35	47.85'	20.00'	28.28'32"
E2.36	47.85'	20.00'	28.28'32"
E2.37	47.85'	20.00'	28.28'32"
E2.38	47.85'	20.00'	28.28'32"
E2.39	47.85'	20.00'	28.28'32"
E2.40	47.85'	20.00'	28.28'32"
E2.41	47.85'	20.00'	28.28'32"
E2.42	47.85'	20.00'	28.28'32"
E2.43	47.85'	20.00'	28.28'32"
E2.44	47.85'	20.00'	28.28'32"
E2.45	47.85'	20.00'	28.28'32"
E2.46	47.85'	20.00'	28.28'32"
E2.47	47.85'	20.00'	28.28'32"
E2.48	47.85'	20.00'	28.28'32"
E2.49	47.85'	20.00'	28.28'32"
E2.50	47.85'	20.00'	28.28'32"

EASEMENT DETAILS
 1" = 50'



RECORDER'S CERTIFICATE 201209190036

Filed for record this 19 day of SEPT 2012 at 10:41 AM
 in book 1807, page 36, at page 36 of the request of

DAVID P. NELSON
 Recorder of Kittitas
 County Auditor

David P. Nelson
 Deputy County Auditor

SURVEYOR'S CERTIFICATE

This map correctly represents a survey made by
 me or under my direction in accordance with the
 requirements of the Survey Recording Act of the
 State of Washington, Chapter 65A RCW, effective
 January 1, 2012.

DAVID P. NELSON
 Surveyor
 Certificate No. 18092



181 NE Maple Street, Suite 201 • Wenatchee, WA 98801 • Phone: (509) 392-0250 • Fax: (509) 391-5055
 105 East 2nd Street • Co. Blinn, WA 98822 • Phone: (509) 674-7433 • Fax: (509) 674-7419

THE PASS LINE AT THE VILLAGE AT THE SUMMIT, DIV. 3, PHASE 1
 A PLANNED UNIT DEVELOPMENT

A PORTION OF THE SOUTH 1/2 OF SECTION 4,
 TOWNSHIP 22 NORTH, RANGE 11 EAST, W.M.,
 KITTITAS COUNTY, WASHINGTON

DRAWN BY: G. WEISER
 CHECKED BY: D. NELSON
 DATE: 7/2012
 SCALE: 1" = 50'
 JOB NO.: 11103
 SHEET: 2 OF 3



APPROVALS

KITTITAS COUNTY DEPARTMENT OF PUBLIC WORKS
 DATED THIS 19 DAY OF JANUARY A.D. 2013
 [Signature]
 KITTITAS COUNTY ENGINEER

KITTITAS COUNTY HEALTH DEPARTMENT
 I HEREBY CERTIFY THAT THE PASS LIFE AT THE VILLAGE AT THE SUMMIT, DIV. 3, PHASE 2, IS AN ANIMAL UNIT DEVELOPMENT THAT HAS BEEN EXAMINED BY ME AND I FIND DOES MEET THE WATER SYSTEM REQUIREMENTS OF THE COUNTY HEALTH DEPARTMENT.
 DATED THIS 19 DAY OF JANUARY A.D. 2013
 [Signature]
 KITTITAS COUNTY HEALTH DEPARTMENT

CERTIFICATE OF COUNTY PLANNING OFFICIAL
 I HEREBY CERTIFY THAT THE PASS LIFE AT THE VILLAGE AT THE SUMMIT, DIV. 3, PHASE 2, A PLANNED UNIT DEVELOPMENT, HAS BEEN EXAMINED BY ME AND I FIND THE DEVELOPMENT IS IN ACCORDANCE WITH THE KITTITAS COUNTY PLANNING COMMISSION.
 DATED THIS 16 DAY OF JANUARY A.D. 2013
 [Signature]
 KITTITAS COUNTY PLANNING OFFICIAL

CERTIFICATE OF KITTITAS COUNTY TREASURER
 I HEREBY CERTIFY THAT THE TAXES AND ASSESSMENTS ARE PAID FOR THE PRECEDING YEARS AND FOR THIS YEAR IN WHICH THE PLAT IS NOW TO BE FILED.
 PARCEL NO.: 22-11-04065-0105 (957895)
 DATED THIS 16 DAY OF JANUARY A.D. 2013
 [Signature]
 KITTITAS COUNTY TREASURER

CERTIFICATE OF KITTITAS COUNTY ASSESSOR
 I HEREBY CERTIFY THAT THE PASS LIFE AT THE VILLAGE AT THE SUMMIT, DIV. 3, PHASE 2, A PLANNED UNIT DEVELOPMENT, HAS BEEN EXAMINED BY ME AND I FIND THE PROPERTY TO BE IN AN ACCEPTABLE CONDITION FOR PLATTING.
 PARCEL NO.: 22-11-04065-0105 (957895)
 DATED THIS 17 DAY OF JANUARY A.D. 2013
 [Signature]
 KITTITAS COUNTY ASSESSOR

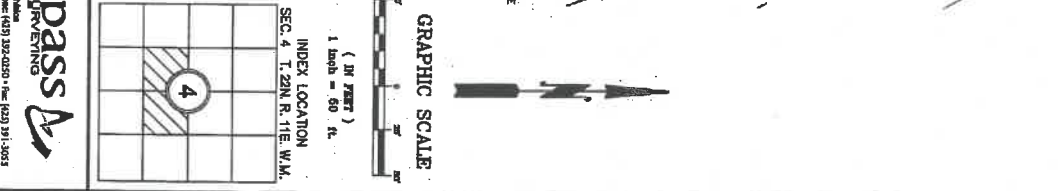
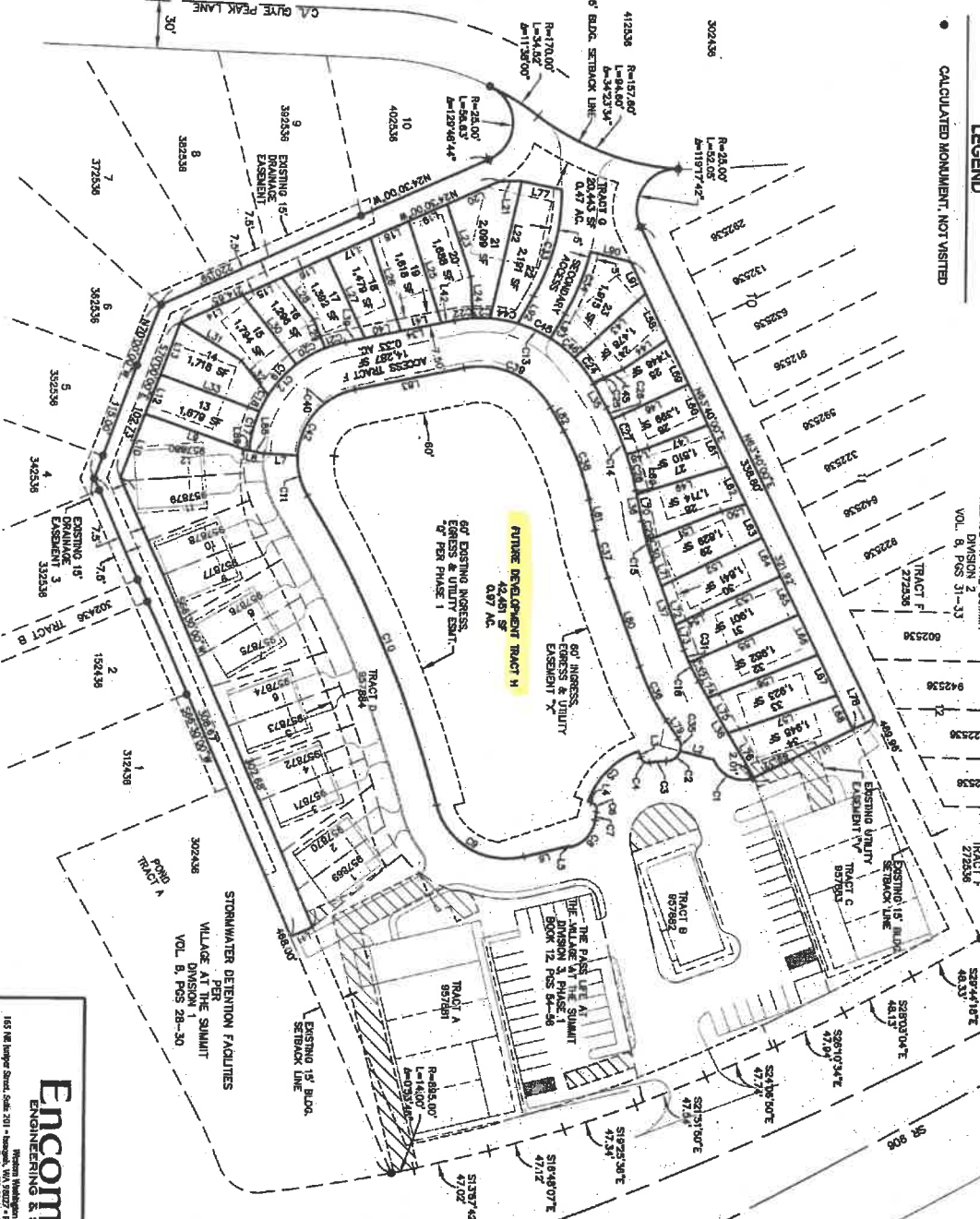
EXAMINED AND APPROVED THIS 9 DAY OF JANUARY A.D. 2013
 [Signature]
 BOARD OF COUNTY COMMISSIONERS
 KITTITAS COUNTY, WASHINGTON
 BY: [Signature]
 CHAIRMAN
 [Signature]
 CLERK OF THE BOARD
 I HEREBY CERTIFY THAT THE APPROVAL OF THIS PLAT IS NOT A GUARANTEE THAT FUTURE RESULTS WILL BE GUARANTEED.



RECORDER'S CERTIFICATE 20140150018
 Filed for record this 15 day of JANUARY 2014 at 10:54 AM in book 18092, page 9, at the request of DAVID P. NELSON, Surveyor, Kittitas County, Washington.
 [Signature]
 County Auditor

SURVEYOR'S CERTIFICATE
 This map correctly represents a survey made by me or under my direction in conformance with the requirements of the Survey Recording Act of the State of Washington.
 DATED: 9/20/13
 DAVID P. NELSON
 Certificate No. 18092

THE PASS LIFE AT THE VILLAGE AT THE SUMMIT, DIV. 3, PHASE 2
 A PLANNED UNIT DEVELOPMENT
 A PORTION OF THE SOUTH 1/2 OF SECTION 4, TOWNSHIP 22 NORTH, RANGE 11 EAST, W.M., KITTITAS COUNTY, WASHINGTON
 DWN BY: G. WEISER
 DATE: 9/20/13
 SCALE: 1"=50'
 JOB NO.: 11103
 SHEET: 1 OF 3



01/15/2014 04:27:42 PM V: 12 P: 91 20140150018
 KITTITAS COUNTY ENGINEER
 [Signature]
 KITTITAS COUNTY ENGINEER

**THE PASS LIFE AT THE VILLAGE AT THE SUMMIT, DIV. 3, PHASE 2
A PLANNED UNIT DEVELOPMENT
A PORTION OF THE SOUTH 1/2 OF SECTION 4,
TOWNSHIP 22 NORTH, RANGE 11 EAST, W.M.,
KITITAS COUNTY, WASHINGTON**

PROPERTY OWNERS
THE PASS, LLC, A WASHINGTON LIMITED LIABILITY COMPANY
1000 1ST AVENUE
PULLMAN WA 99130

PLAT INFORMATION
PROJECT NUMBER: 957995
MAP NUMBER: 22-11-0005-0105
ACRES: 2.84
TRACTS: 3
WATER SOURCE: SNOQUALMIE PUBLIC UTILITY DIST.
SEWER SOURCE: SNOQUALMIE PUBLIC UTILITY DIST.
ZONE: PLANNED UNIT DEVELOPMENT
LAND USE: RURAL

**LINE & CURVE TABLES FOR
BOUNDARY, LOT & TRACTS**

LINE	BEARING	DISTANCE	LINE	BEARING	DISTANCE	LINE	BEARING	DISTANCE
L1	N82°31'17"W	86.33	L47	S29°24'57"E	40.12	G1	78.16'	70.00'
L2	S12°17'24"W	41.56	L48	S17°02'17"E	40.90	G2	11.62'	8.00'
L3	N10°28'52"E	2.28	L49	N11°05'22"W	18.74	G3	7.36'	5.00'
L4	S72°45'42"W	1.00	L50	N11°28'22"W	80.90	G4	45.86'	51.36'
L5	N14°14'18"W	28.64	L51	S00°10'47"E	60.85	G5	7.36'	5.00'
L6	N02°38'08"E	21.00	L52	S00°10'47"E	11.19	G6	4.17'	4.43'
L7	N11°17'40"E	19.70	L53	N42°58'15"W	18.32	G7	23.89'	21.00'
L8	N10°24'31"E	54.23	L54	S23°54'47"E	74.84	G8	20.80'	21.00'
L9	S20°00'00"E	15.00	L55	S21°44'07"E	73.88	G9	20.80'	21.00'
L10	N20°00'00"E	15.00	L56	N00°00'00"E	31.82	G10	18.11'	74.00'
L11	N20°00'00"E	34.63	L57	N00°00'00"E	30.86	G11	100.31'	79.00'
L12	N20°00'00"E	34.63	L58	N00°00'00"E	30.86	G12	84.16'	172°24'44"
L13	N24°30'00"W	28.44	L59	N00°00'00"E	28.45	G13	171.00'	82°51'42"
L14	N24°30'00"W	28.44	L60	N00°00'00"E	28.45	G14	171.00'	82°51'42"
L15	N24°30'00"W	31.33	L61	N00°00'00"E	28.45	G15	28.12'	120.00'
L16	N24°30'00"W	28.45	L62	N00°00'00"E	28.45	G16	28.10'	120.00'
L17	N24°30'00"W	28.45	L63	N00°00'00"E	28.45	G17	11.42'	74.00'
L18	N24°30'00"W	28.45	L64	N00°00'00"E	28.45	G18	20.30'	74.00'
L19	N24°30'00"W	34.78	L65	N00°00'00"E	27.73	G19	11.42'	74.00'
L20	N24°30'00"W	18.00	L66	N00°00'00"E	27.73	G20	11.42'	74.00'
L21	N24°30'00"W	18.00	L67	N00°00'00"E	27.73	G21	11.42'	74.00'
L22	N24°30'00"W	47.21	L68	N00°00'00"E	27.73	G22	11.42'	74.00'
L23	N24°30'00"W	47.21	L69	N00°00'00"E	27.73	G23	11.42'	74.00'
L24	N24°30'00"W	28.67	L70	N00°00'00"E	27.73	G24	11.42'	74.00'
L25	N24°30'00"W	68.28	L71	N00°00'00"E	18.82	G25	1.86'	179.00'
L26	N24°30'00"W	68.28	L72	N00°00'00"E	28.02	G26	1.86'	179.00'
L27	N24°30'00"W	68.28	L73	N00°00'00"E	11.85	G27	2.85'	171.00'
L28	N24°30'00"W	32.80	L74	N00°00'00"E	25.28	G28	12.27'	171.00'
L29	N24°30'00"W	18.00	L75	N00°00'00"E	31.97	G29	13.36'	171.00'
L30	N24°30'00"W	44.44	L76	N00°00'00"E	31.97	G30	13.36'	171.00'
L31	N24°30'00"W	44.44	L77	N11°32'01"E	24.78	G31	8.31'	120.00'
L32	N24°30'00"W	27.02	L78	S00°00'00"E	18.00	G32	13.16'	120.00'
L33	S00°00'00"E	84.94	L79	S00°00'00"E	13.13	G33	48.07'	120.00'
L34	N11°31'37"W	84.10	L80	N00°00'00"E	38.43	G34	41.64'	192.00'
L35	N02°55'32"E	18.32	L81	N00°00'00"E	18.32	G35	8.00'	192.00'
L36	N02°55'32"E	68.43	L82	N00°00'00"E	18.32	G36	32.50'	192.00'
L37	N02°55'32"E	68.43	L83	N00°00'00"E	68.10	G37	32.50'	192.00'
L38	N02°55'32"E	68.43	L84	N00°00'00"E	68.10	G38	48.22'	192.00'
L39	N02°55'32"E	22.41	L85	N00°00'00"E	22.41	G39	48.22'	192.00'
L40	N11°31'37"W	28.66	L86	N00°00'00"E	21.58	G40	48.41'	192.00'
L41	N11°31'37"W	7.80	L87	N00°00'00"E	18.48	G41	18.88'	79.00'
L42	S42°32'46"E	58.73	L88	S00°00'00"E	17.80	G42	18.88'	79.00'
L43	S42°32'46"E	58.73	L89	S00°00'00"E	17.80	G43	18.88'	79.00'
L44	S42°32'46"E	58.73	L90	S00°00'00"E	17.80	G44	18.88'	79.00'
L45	S42°32'46"E	58.73	L91	S00°00'00"E	17.80	G45	18.88'	79.00'
L46	S42°32'46"E	58.73	L92	S00°00'00"E	17.80	G46	18.88'	79.00'
L47	S42°32'46"E	58.73	L93	S00°00'00"E	17.80	G47	18.88'	79.00'

RECORDER'S CERTIFICATE 2014 01/15/2013

Filed for record this 15 day of JAN. 2014 at 10:15 AM in book 2013-1-15-1 of page 17-1-15-1 at the request of David P. NELSON Surveyor by a Notary Public.

DAVID P. NELSON
Notary Public
County Auditor

SURVEYOR'S CERTIFICATE

This map correctly represents a survey made by me or under my direction in conformance with the requirements of the Survey Recording Act of the State of Washington, Chapter 65A RCW, effective January 1, 2013.

DAVID P. NELSON
Surveyor
Certificate No. 18092

Encompass
ENGINEERING & SURVEYING

161 5th Avenue South, Suite 201 - Pullman, WA 99130 (509) 337-0039 • Fax (509) 337-0035
100 East 2nd Street - Co. Bldg. WA 99212 • Phone (509) 674-4433 • Fax (509) 674-4419

DRAWN BY	DATE	JOB NO.
G. WEISER	9/2013	11103
CHECKED BY	SCALE	SHEET
D. NELSON	N/A	2 OF 3

THE PASS LIFE AT THE VILLAGE AT THE SUMMIT, DIV. 3, PHASE 2
A PLANNED UNIT DEVELOPMENT
A PORTION OF THE SOUTH 1/2 OF SECTION 4,
TOWNSHIP 22 NORTH, RANGE 11 EAST, W.M.,
KITITAS COUNTY, WASHINGTON



- EXISTING LEGAL DESCRIPTION:**
- TRACT 5, THE PASS LIFE AT THE VILLAGE AT THE SUMMIT, DIV. 3, PHASE 1, A PLANNED UNIT DEVELOPMENT, IN THE COUNTY OF KITITAS, STATE OF WASHINGTON, AS PER PLAT RECORDED IN BOOK 12 OF PLATS, PAGES 54 THROUGH 56, UNDER AUDITOR'S FILE NO. 201009190036, RECORDS OF SAO COUNTY.
- NOTES:**
- A PUBLIC UTILITY EASEMENT 10 FEET IN WIDTH IS RESERVED ALONG ALL LOT LINES. THE 10 FOOT EASEMENT SHALL ABUT THE EXISTING PLAT BOUNDARY.
 - FOR ROW 17101410 LANDOWNERS ARE RESPONSIBLE FOR CONTROLLING AND PREVENTING THE GROWTH OF NOXIOUS WEEDS. ACCORDINGLY, THE KITITAS COUNTY RECORDS DEPT. RECOMMENDS IMMEDIATE REMEDIATION OF WEEDS DISTURBED BY DEVELOPMENT TO PRECLUDE THE PRODUCTION OF NOXIOUS WEEDS STANDARDS.
 - ANY FURTHER SUBDIVISION OR LOTS TO BE SERVED BY PROPOSED ACCESS MAY RESULT IN FURTHER ACCESS REQUIREMENTS. SEE THE KITITAS COUNTY ROAD STANDARDS.
 - AN APPROVED ACCESS PERMIT WILL BE REQUIRED FROM THE DEPARTMENT OF PUBLIC WORKS PRIOR TO CREATING ANY NEW DRIVEWAY ACCESS OR PERFORMANCE WORK WITHIN THE COUNTY ROAD RIGHT-OF-WAY.
 - THIS SURVEY DOES NOT PURPORT TO SHOW ALL EASEMENTS OF RECORD OR OTHERWISE.
 - MAINTENANCE OF THE ACCESS IS THE RESPONSIBILITY OF THE PROPERTY OWNERS WHO BENEFIT FROM ITS USE.
 - PRIVATE PRIVATE ROAD SHALL AGREE FOR COMPANION AND SHALL BE INSPECTED AND CERTIFIED BY A LICENSED ENGINEER IN THE STATE OF WASHINGTON BEFORE THE ROAD MEETS CURRENT KITITAS COUNTY ROAD STANDARDS. 9/9/08 EDITH, FROM TO THE ISSUANCE OF A BOLDING PERMIT FOR THIS PLAT.
 - KITITAS COUNTY WILL NOT ACCEPT PRIVATE ROADS FOR MAINTENANCE AS PUBLIC STREETS OR ROADS UNLESS SUCH STREETS OR ROADS ARE BROUGHT INTO COMPLIANCE WITH CURRENT COUNTY ROAD STANDARDS. THIS REQUIREMENT WILL INCLUDE THE HARD SURFACE PAVING OF ANY STREET OR ROAD SURFACED ORIGINALLY WITH GRAVEL.
 - FOR ADDITIONAL SURVEY INFORMATION, BASIS OF BEARINGS AND CORNER DOCUMENTATION SEE VOLUME 8 OF PLATS, PAGES 28, 29 AND 30, RECORDED UNDER AUDITOR'S FILE NUMBER 2004000000 AND BOOK 12 OF PLATS, PAGES 54 THROUGH 56, RECORDED UNDER AUDITOR'S FILE NUMBER 201009190036, KITITAS COUNTY, STATE OF WASHINGTON.
 - THE ROADS WITHIN THIS PLAT WILL NOT BE "ON-SYSTEM" COUNTY ROADS UNTIL THEY ARE CONSTRUCTED AND APPROVED BY KITITAS COUNTY PUBLIC WORKS, AND ACCEPTED ONTO THE COUNTY SYSTEM THROUGH RESOLUTION BY THE BOARD OF COUNTY COMMISSIONERS. THE DEVELOPER IS RESPONSIBLE FOR ALL MAINTENANCE AND OPERATION UNTIL SUCH TIME AS DESCRIBED IN THE KITITAS COUNTY ROAD STANDARDS.
 - THE PURPOSE OF THIS PLAT IS TO DEVELOP THE PASS LIFE AT THE VILLAGE AT THE SUMMIT, DIV. 3, PHASE 2, A PLANNED UNIT DEVELOPMENT.
 - FOR ADDITIONAL SURVEY INFORMATION, BASIS OF BEARINGS AND CORNER DOCUMENTATION SEE VOLUME 8 OF PLATS, PAGES 28, 29 AND 30, RECORDED UNDER AUDITOR'S FILE NUMBER 2004000000 AND BOOK 12 OF PLATS, PAGES 54 THROUGH 56, RECORDED UNDER AUDITOR'S FILE NUMBER 201009190036, KITITAS COUNTY, STATE OF WASHINGTON.
 - FOR ADDITIONAL SURVEY INFORMATION, BASIS OF BEARINGS AND CORNER DOCUMENTATION SEE VOLUME 8 OF PLATS, PAGES 28, 29 AND 30, RECORDED UNDER AUDITOR'S FILE NUMBER 2004000000 AND BOOK 12 OF PLATS, PAGES 54 THROUGH 56, RECORDED UNDER AUDITOR'S FILE NUMBER 201009190036, KITITAS COUNTY, STATE OF WASHINGTON.
 - FOR ADDITIONAL SURVEY INFORMATION, BASIS OF BEARINGS AND CORNER DOCUMENTATION SEE VOLUME 8 OF PLATS, PAGES 28, 29 AND 30, RECORDED UNDER AUDITOR'S FILE NUMBER 2004000000 AND BOOK 12 OF PLATS, PAGES 54 THROUGH 56, RECORDED UNDER AUDITOR'S FILE NUMBER 201009190036, KITITAS COUNTY, STATE OF WASHINGTON.
 - FOR ADDITIONAL SURVEY INFORMATION, BASIS OF BEARINGS AND CORNER DOCUMENTATION SEE VOLUME 8 OF PLATS, PAGES 28, 29 AND 30, RECORDED UNDER AUDITOR'S FILE NUMBER 2004000000 AND BOOK 12 OF PLATS, PAGES 54 THROUGH 56, RECORDED UNDER AUDITOR'S FILE NUMBER 201009190036, KITITAS COUNTY, STATE OF WASHINGTON.
 - FOR ADDITIONAL SURVEY INFORMATION, BASIS OF BEARINGS AND CORNER DOCUMENTATION SEE VOLUME 8 OF PLATS, PAGES 28, 29 AND 30, RECORDED UNDER AUDITOR'S FILE NUMBER 2004000000 AND BOOK 12 OF PLATS, PAGES 54 THROUGH 56, RECORDED UNDER AUDITOR'S FILE NUMBER 201009190036, KITITAS COUNTY, STATE OF WASHINGTON.
 - FOR ADDITIONAL SURVEY INFORMATION, BASIS OF BEARINGS AND CORNER DOCUMENTATION SEE VOLUME 8 OF PLATS, PAGES 28, 29 AND 30, RECORDED UNDER AUDITOR'S FILE NUMBER 2004000000 AND BOOK 12 OF PLATS, PAGES 54 THROUGH 56, RECORDED UNDER AUDITOR'S FILE NUMBER 201009190036, KITITAS COUNTY, STATE OF WASHINGTON.
 - FOR ADDITIONAL SURVEY INFORMATION, BASIS OF BEARINGS AND CORNER DOCUMENTATION SEE VOLUME 8 OF PLATS, PAGES 28, 29 AND 30, RECORDED UNDER AUDITOR'S FILE NUMBER 2004000000 AND BOOK 12 OF PLATS, PAGES 54 THROUGH 56, RECORDED UNDER AUDITOR'S FILE NUMBER 201009190036, KITITAS COUNTY, STATE OF WASHINGTON.
 - FOR ADDITIONAL SURVEY INFORMATION, BASIS OF BEARINGS AND CORNER DOCUMENTATION SEE VOLUME 8 OF PLATS, PAGES 28, 29 AND 30, RECORDED UNDER AUDITOR'S FILE NUMBER 2004000000 AND BOOK 12 OF PLATS, PAGES 54 THROUGH 56, RECORDED UNDER AUDITOR'S FILE NUMBER 201009190036, KITITAS COUNTY, STATE OF WASHINGTON.
 - FOR ADDITIONAL SURVEY INFORMATION, BASIS OF BEARINGS AND CORNER DOCUMENTATION SEE VOLUME 8 OF PLATS, PAGES 28, 29 AND 30, RECORDED UNDER AUDITOR'S FILE NUMBER 2004000000 AND BOOK 12 OF PLATS, PAGES 54 THROUGH 56, RECORDED UNDER AUDITOR'S FILE NUMBER 201009190036, KITITAS COUNTY, STATE OF WASHINGTON.
 - FOR ADDITIONAL SURVEY INFORMATION, BASIS OF BEARINGS AND CORNER DOCUMENTATION SEE VOLUME 8 OF PLATS, PAGES 28, 29 AND 30, RECORDED UNDER AUDITOR'S FILE NUMBER 2004000000 AND BOOK 12 OF PLATS, PAGES 54 THROUGH 56, RECORDED UNDER AUDITOR'S FILE NUMBER 201009190036, KITITAS COUNTY, STATE OF WASHINGTON.
 - FOR ADDITIONAL SURVEY INFORMATION, BASIS OF BEARINGS AND CORNER DOCUMENTATION SEE VOLUME 8 OF PLATS, PAGES 28, 29 AND 30, RECORDED UNDER AUDITOR'S FILE NUMBER 2004000000 AND BOOK 12 OF PLATS, PAGES 54 THROUGH 56, RECORDED UNDER AUDITOR'S FILE NUMBER 201009190036, KITITAS COUNTY, STATE OF WASHINGTON.
 - FOR ADDITIONAL SURVEY INFORMATION, BASIS OF BEARINGS AND CORNER DOCUMENTATION SEE VOLUME 8 OF PLATS, PAGES 28, 29 AND 30, RECORDED UNDER AUDITOR'S FILE NUMBER 2004000000 AND BOOK 12 OF PLATS, PAGES 54 THROUGH 56, RECORDED UNDER AUDITOR'S FILE NUMBER 201009190036, KITITAS COUNTY, STATE OF WASHINGTON.
 - FOR ADDITIONAL SURVEY INFORMATION, BASIS OF BEARINGS AND CORNER DOCUMENTATION SEE VOLUME 8 OF PLATS, PAGES 28, 29 AND 30, RECORDED UNDER AUDITOR'S FILE NUMBER 2004000000 AND BOOK 12 OF PLATS, PAGES 54 THROUGH 56, RECORDED UNDER AUDITOR'S FILE NUMBER 201009190036, KITITAS COUNTY, STATE OF WASHINGTON.
 - FOR ADDITIONAL SURVEY INFORMATION, BASIS OF BEARINGS AND CORNER DOCUMENTATION SEE VOLUME 8 OF PLATS, PAGES 28, 29 AND 30, RECORDED UNDER AUDITOR'S FILE NUMBER 2004000000 AND BOOK 12 OF PLATS, PAGES 54 THROUGH 56, RECORDED UNDER AUDITOR'S FILE NUMBER 201009190036, KITITAS COUNTY, STATE OF WASHINGTON.
 - FOR ADDITIONAL SURVEY INFORMATION, BASIS OF BEARINGS AND CORNER DOCUMENTATION SEE VOLUME 8 OF PLATS, PAGES 28, 29 AND 30, RECORDED UNDER AUDITOR'S FILE NUMBER 2004000000 AND BOOK 12 OF PLATS, PAGES 54 THROUGH 56, RECORDED UNDER AUDITOR'S FILE NUMBER 201009190036, KITITAS COUNTY, STATE OF WASHINGTON.
 - FOR ADDITIONAL SURVEY INFORMATION, BASIS OF BEARINGS AND CORNER DOCUMENTATION SEE VOLUME 8 OF PLATS, PAGES 28, 29 AND 30, RECORDED UNDER AUDITOR'S FILE NUMBER 2004000000 AND BOOK 12 OF PLATS, PAGES 54 THROUGH 56, RECORDED UNDER AUDITOR'S FILE NUMBER 201009190036, KITITAS COUNTY, STATE OF WASHINGTON.
 - FOR ADDITIONAL SURVEY INFORMATION, BASIS OF BEARINGS AND CORNER DOCUMENTATION SEE VOLUME 8 OF PLATS, PAGES 28, 29 AND 30, RECORDED UNDER AUDITOR'S FILE NUMBER 2004000000 AND BOOK 12 OF PLATS, PAGES 54 THROUGH 56, RECORDED UNDER AUDITOR'S FILE NUMBER 201009190036, KITITAS COUNTY, STATE OF WASHINGTON.
 - FOR ADDITIONAL SURVEY INFORMATION, BASIS OF BEARINGS AND CORNER DOCUMENTATION SEE VOLUME 8 OF PLATS, PAGES 28, 29 AND 30, RECORDED UNDER AUDITOR'S FILE NUMBER 2004000000 AND BOOK 12 OF PLATS, PAGES 54 THROUGH 56, RECORDED UNDER AUDITOR'S FILE NUMBER 201009190036, KITITAS COUNTY, STATE OF WASHINGTON.
 - FOR ADDITIONAL SURVEY INFORMATION, BASIS OF BEARINGS AND CORNER DOCUMENTATION SEE VOLUME 8 OF PLATS, PAGES 28, 29 AND 30, RECORDED UNDER AUDITOR'S FILE NUMBER 2004000000 AND BOOK 12 OF PLATS, PAGES 54 THROUGH 56, RECORDED UNDER AUDITOR'S FILE NUMBER 201009190036, KITITAS COUNTY, STATE OF WASHINGTON.
 - FOR ADDITIONAL SURVEY INFORMATION, BASIS OF BEARINGS AND CORNER DOCUMENTATION SEE VOLUME 8 OF PLATS, PAGES 28, 29 AND 30, RECORDED UNDER AUDITOR'S FILE NUMBER 2004000000 AND BOOK 12 OF PLATS, PAGES 54 THROUGH 56, RECORDED UNDER AUDITOR'S FILE NUMBER 201009190036, KITITAS COUNTY, STATE OF WASHINGTON.
 - FOR ADDITIONAL SURVEY INFORMATION, BASIS OF BEARINGS AND CORNER DOCUMENTATION SEE VOLUME 8 OF PLATS, PAGES 28, 29 AND 30, RECORDED UNDER AUDITOR'S FILE NUMBER 2004000000 AND BOOK 12 OF PLATS, PAGES 54 THROUGH 56, RECORDED UNDER AUDITOR'S FILE NUMBER 201009190036, KITITAS COUNTY, STATE OF WASHINGTON.
 - FOR ADDITIONAL SURVEY INFORMATION, BASIS OF BEARINGS AND CORNER DOCUMENTATION SEE VOLUME 8 OF PLATS, PAGES 28, 29 AND 30, RECORDED UNDER AUDITOR'S FILE NUMBER 2004000000 AND BOOK 12 OF PLATS, PAGES 54 THROUGH 56, RECORDED UNDER AUDITOR'S FILE NUMBER 201009190036, KITITAS COUNTY, STATE OF WASHINGTON.
 - FOR ADDITIONAL SURVEY INFORMATION, BASIS OF BEARINGS AND CORNER DOCUMENTATION SEE VOLUME 8 OF PLATS, PAGES 28, 29 AND 30, RECORDED UNDER AUDITOR'S FILE NUMBER 2004000000 AND BOOK 12 OF PLATS, PAGES 54 THROUGH 56, RECORDED UNDER AUDITOR'S FILE NUMBER 201009190036, KITITAS COUNTY, STATE OF WASHINGTON.
 - FOR ADDITIONAL SURVEY INFORMATION, BASIS OF BEARINGS AND CORNER DOCUMENTATION SEE VOLUME 8 OF PLATS, PAGES 28, 29 AND 30, RECORDED UNDER AUDITOR'S FILE NUMBER 2004000000 AND BOOK 12 OF PLATS, PAGES 54 THROUGH 56, RECORDED UNDER AUDITOR'S FILE NUMBER 201009190036, KITITAS COUNTY, STATE OF WASHINGTON.
 - FOR ADDITIONAL SURVEY INFORMATION, BASIS OF BEARINGS AND CORNER DOCUMENTATION SEE VOLUME 8 OF PLATS, PAGES 28, 29 AND 30, RECORDED UNDER AUDITOR'S FILE NUMBER 2004000000 AND BOOK 12 OF PLATS, PAGES 54 THROUGH 56, RECORDED UNDER AUDITOR'S FILE NUMBER 201009190036, KITITAS COUNTY, STATE OF WASHINGTON.
 - FOR ADDITIONAL SURVEY INFORMATION, BASIS OF BEARINGS AND CORNER DOCUMENTATION SEE VOLUME 8 OF PLATS, PAGES 28, 29 AND 30, RECORDED UNDER AUDITOR'S FILE NUMBER 2004000000 AND BOOK 12 OF PLATS, PAGES 54 THROUGH 56, RECORDED UNDER AUDITOR'S FILE NUMBER 201009190036, KITITAS COUNTY, STATE OF WASHINGTON.
 - FOR ADDITIONAL SURVEY INFORMATION, BASIS OF BEARINGS AND CORNER DOCUMENTATION SEE VOLUME 8 OF PLATS, PAGES 28, 29 AND 30, RECORDED UNDER AUDITOR'S FILE NUMBER 2004000000 AND BOOK 12 OF PLATS, PAGES 54 THROUGH 56, RECORDED UNDER AUDITOR'S FILE NUMBER 201009190036, KITITAS COUNTY, STATE OF WASHINGTON.
 - FOR ADDITIONAL SURVEY INFORMATION, BASIS OF BEARINGS AND CORNER DOCUMENTATION SEE VOLUME 8 OF PLATS, PAGES 28, 29 AND 30, RECORDED UNDER AUDITOR'S FILE NUMBER 2004000000 AND BOOK 12 OF PLATS, PAGES 54 THROUGH 56, RECORDED UNDER AUDITOR'S FILE NUMBER 201009190036, KITITAS COUNTY, STATE OF WASHINGTON.
 - FOR ADDITIONAL SURVEY INFORMATION, BASIS OF BEARINGS AND CORNER DOCUMENTATION SEE VOLUME 8 OF PLATS, PAGES 28, 29 AND 30, RECORDED UNDER AUDITOR'S FILE NUMBER 2004000000 AND BOOK 12 OF PLATS, PAGES 54 THROUGH 56, RECORDED UNDER AUDITOR'S FILE NUMBER 201009190036, KITITAS COUNTY, STATE OF WASHINGTON.
 - FOR ADDITIONAL SURVEY INFORMATION, BASIS OF BEARINGS AND CORNER DOCUMENTATION SEE VOLUME 8 OF PLATS, PAGES 28, 29 AND 30, RECORDED UNDER AUDITOR'S FILE NUMBER 2004000000 AND BOOK 12 OF PLATS, PAGES 54 THROUGH 56, RECORDED UNDER AUDITOR'S FILE NUMBER 201009190036, KITITAS COUNTY, STATE OF WASHINGTON.
 - FOR ADDITIONAL SURVEY INFORMATION, BASIS OF BEARINGS AND CORNER DOCUMENTATION SEE VOLUME 8 OF PLATS, PAGES 28, 29 AND 30, RECORDED UNDER AUDITOR'S FILE NUMBER 2004000000 AND BOOK 12 OF PLATS, PAGES 54 THROUGH 56, RECORDED UNDER AUDITOR'S FILE NUMBER 201009190036, KITITAS COUNTY, STATE OF WASHINGTON.
 - FOR ADDITIONAL SURVEY INFORMATION, BASIS OF BEARINGS AND CORNER DOCUMENTATION SEE VOLUME 8 OF PLATS, PAGES 28, 29 AND 30, RECORDED UNDER AUDITOR'S FILE NUMBER 2004000000 AND BOOK 12 OF PLATS, PAGES 54 THROUGH 56, RECORDED UNDER AUDITOR'S FILE NUMBER 201009190036, KITITAS COUNTY, STATE OF WASHINGTON.
 - FOR ADDITIONAL SURVEY INFORMATION, BASIS OF BEARINGS AND CORNER DOCUMENTATION SEE VOLUME 8 OF PLATS, PAGES 28, 29 AND 30, RECORDED UNDER AUDITOR'S FILE NUMBER 2004000000 AND BOOK 12 OF PLATS, PAGES 54 THROUGH 56, RECORDED UNDER AUDITOR'S FILE NUMBER 201009190036, KITITAS COUNTY, STATE OF WASHINGTON.
 - FOR ADDITIONAL SURVEY INFORMATION, BASIS OF BEARINGS AND CORNER DOCUMENTATION SEE VOLUME 8 OF PLATS, PAGES 28, 29 AND 30, RECORDED UNDER AUDITOR'S FILE NUMBER 2004000000 AND BOOK 12 OF PLATS, PAGES 54 THROUGH 56, RECORDED UNDER AUDITOR'S FILE NUMBER 201009190036, KITITAS COUNTY, STATE OF WASHINGTON.
 - FOR ADDITIONAL SURVEY INFORMATION, BASIS OF BEARINGS AND CORNER DOCUMENTATION SEE VOLUME 8 OF PLATS, PAGES 28, 29 AND 30, RECORDED UNDER AUDITOR'S FILE NUMBER 2004000000 AND BOOK 12 OF PLATS, PAGES 54 THROUGH 56, RECORDED UNDER AUDITOR'S FILE NUMBER 201009190036, KITITAS COUNTY, STATE OF WASHINGTON.
 - FOR ADDITIONAL SURVEY INFORMATION, BASIS OF BEARINGS AND CORNER DOCUMENTATION SEE VOLUME 8 OF PLATS, PAGES 28, 29 AND 30, RECORDED UNDER AUDITOR'S FILE NUMBER 2004000000 AND BOOK 12 OF PLATS, PAGES 54 THROUGH 56, RECORDED UNDER AUDITOR'S FILE NUMBER 201009190036, KITITAS COUNTY, STATE OF WASHINGTON.
 - FOR ADDITIONAL SURVEY INFORMATION, BASIS OF BEARINGS AND CORNER DOCUMENTATION SEE VOLUME 8 OF PLATS, PAGES 28, 29 AND 30, RECORDED UNDER AUDITOR'S FILE NUMBER 2004000000 AND BOOK 12 OF PLATS, PAGES 54 THROUGH 56, RECORDED UNDER AUDITOR'S FILE NUMBER 201009190036, KITITAS COUNTY, STATE OF WASHINGTON.
 - FOR ADDITIONAL SURVEY INFORMATION, BASIS OF BEARINGS AND CORNER DOCUMENTATION SEE VOLUME 8 OF PLATS, PAGES 28, 29 AND 30, RECORDED UNDER AUDITOR'S FILE NUMBER 2004000000 AND BOOK 12 OF PLATS, PAGES 54 THROUGH 56, RECORDED UNDER AUDITOR'S FILE NUMBER 201009190036, KITITAS COUNTY, STATE OF WASHINGTON.
 - FOR ADDITIONAL SURVEY INFORMATION, BASIS OF BEARINGS AND CORNER DOCUMENTATION SEE VOLUME 8 OF PLATS, PAGES 28, 29 AND 30, RECORDED UNDER AUDITOR'S FILE NUMBER 2004000000 AND BOOK 12 OF PLATS, PAGES 54 THROUGH 56, RECORDED UNDER AUDITOR'S FILE NUMBER 201009190036, KITITAS COUNTY, STATE OF WASHINGTON.
 - FOR ADDITIONAL SURVEY INFORMATION, BASIS OF BEARINGS AND CORNER DOCUMENTATION SEE VOLUME 8 OF PLATS, PAGES 28, 29 AND 30, RECORDED UNDER AUDITOR'S FILE NUMBER 2004000000 AND BOOK 12 OF PLATS, PAGES 54 THROUGH 56, RECORDED UNDER AUDITOR'S FILE NUMBER 201009190036, KITITAS COUNTY, STATE OF WASHINGTON.
 - FOR ADDITIONAL SURVEY INFORMATION, BASIS OF BEARINGS AND CORNER DOCUMENTATION SEE VOLUME 8 OF PLATS, PAGES 28, 29 AND 30, RECORDED UNDER AUDITOR'S FILE NUMBER 2004000000 AND BOOK 12 OF PLATS, PAGES 54 THROUGH 56, RECORDED UNDER AUDITOR'S FILE NUMBER 201009190036, KITITAS COUNTY, STATE OF WASHINGTON.
 - FOR ADDITIONAL SURVEY INFORMATION, BASIS OF BEARINGS AND CORNER DOCUMENTATION SEE VOLUME 8 OF PLATS, PAGES 28, 29 AND 30, RECORDED UNDER AUDITOR'S FILE NUMBER 2004000000 AND BOOK 12 OF PLATS, PAGES 54 THROUGH 56, RECORDED UNDER AUDITOR'S FILE NUMBER 201009190036, KITITAS COUNTY, STATE OF WASHINGTON.
 - FOR ADDITIONAL SURVEY INFORMATION, BASIS OF BEARINGS AND CORNER DOCUMENTATION SEE VOLUME 8 OF PLATS, PAGES 28, 29 AND 30, RECORDED UNDER AUDITOR'S FILE NUMBER 2004000000 AND BOOK 12 OF PLATS, PAGES 54 THROUGH 56, RECORDED UNDER AUDITOR'S FILE NUMBER 201009190036, KITITAS COUNTY, STATE OF WASHINGTON.
 - FOR ADDITIONAL SURVEY INFORMATION, BASIS OF BEARINGS AND CORNER DOCUMENTATION SEE VOLUME 8 OF PLATS, PAGES 28, 29 AND 30, RECORDED UNDER AUDITOR'S FILE NUMBER 2004000000 AND BOOK 12 OF PLATS, PAGES 54 THROUGH 56, RECORDED UNDER AUDITOR'S FILE NUMBER 201009190036, KITITAS COUNTY, STATE OF WASHINGTON.
 - FOR ADDITIONAL SURVEY INFORMATION, BASIS OF BEARINGS AND CORNER DOCUMENTATION SEE VOLUME 8 OF PLATS, PAGES 28, 29 AND 30, RECORDED UNDER AUDITOR'S FILE NUMBER 2004000000 AND BOOK 12 OF PLATS, PAGES 54 THROUGH 56, RECORDED UNDER AUDITOR'S FILE NUMBER 201009190036, KITITAS COUNTY, STATE OF WASHINGTON.
 - FOR ADDITIONAL SURVEY INFORMATION, BASIS OF BEARINGS AND CORNER DOCUMENTATION SEE VOLUME 8 OF PLATS, PAGES 28, 29 AND 30, RECORDED UNDER AUDITOR'S FILE NUMBER 2004000000 AND BOOK 12 OF PLATS, PAGES 54 THROUGH 56, RECORDED UNDER AUDITOR'S FILE NUMBER 201009190036, KITITAS COUNTY, STATE OF WASHINGTON.
 - FOR ADDITIONAL SURVEY INFORMATION, BASIS OF BEARINGS AND CORNER DOCUMENTATION SEE VOLUME 8 OF PLATS, PAGES 28, 29 AND 30, RECORDED UNDER AUDITOR'S FILE NUMBER 2004000000 AND BOOK 12 OF PLATS, PAGES 54 THROUGH 56, RECORDED UNDER AUDITOR'S FILE NUMBER 201009190036, KITITAS COUNTY, STATE OF WASHINGTON.
 - FOR ADDITIONAL SURVEY INFORMATION, BASIS OF BEARINGS AND CORNER DOCUMENTATION SEE VOLUME 8 OF PLATS, PAGES 28, 29 AND 30, RECORDED UNDER AUDITOR'S FILE NUMBER 2004000000 AND BOOK 12 OF PLATS, PAGES 54 THROUGH 56, RECORDED UNDER AUDITOR'S FILE NUMBER 201009190036, KITITAS COUNTY, STATE OF WASHINGTON.
 - FOR ADDITIONAL SURVEY INFORMATION, BASIS OF BEARINGS AND CORNER DOCUMENTATION SEE VOLUME 8 OF PLATS, PAGES 28, 29 AND 30, RECORDED UNDER AUDITOR'S FILE NUMBER 2004000000 AND BOOK 12 OF PLATS, PAGES 54 THROUGH 56, RECORDED UNDER AUDITOR'S FILE NUMBER 201009190036, KITITAS COUNTY, STATE OF WASHINGTON.
 - FOR ADDITIONAL SURVEY INFORMATION, BASIS OF BEARINGS AND CORNER DOCUMENTATION SEE VOLUME 8 OF PLATS, PAGES 28, 29 AND 30, RECORDED UNDER AUDITOR'S

NOTE:
THE EXISTING UTILITIES AS SHOWN ARE ONE APPROXIMATE AND ARE BASED ON THE BEST AVAILABLE INFORMATION. IT SHALL BE THE CONTRACTOR'S RESPONSIBILITY TO VERIFY THE SIZE, TYPE, LOCATION AND DEPTH OF ALL UTILITIES PRIOR TO ANY CONSTRUCTION, AND BEFORE THE DESIGN ENGINEER OF ANY DISCREPANCIES.
Call Before You Dig
1-800-685-4344

THE PASS LIFE AT THE VILLAGE AT THE SUMMIT, DIV. 3, PHASE 2
A PLANNED UNIT DEVELOPMENT
A PORTION OF THE SOUTH 1/2 OF SECTION 4,
TOWNSHIP 22 NORTH, RANGE 11 EAST, W.M.,
KITTIKAS COUNTY, WASHINGTON

01/19/2014 04:27:52 PM V. 12 P. 33 201401150018
Kitikass County Auditor
Page 3 of 3

DEDICATION

KNOW ALL MEN BY THESE PRESENTS THAT PEOPLES BANK, THE UNDERSIGNED BENEVOLENCE OF A DEED OF TRUST DOES HEREBY DECLINE, SUBORDINATE AND PLAY AS HEREIN DESCRIBED. IN WITNESS WHEREOF, WE HAVE SET OUR HANDS THIS 15th DAY OF JANUARY, 2014.

NAME: Peoples Bank
TITLE: Trustee



ACKNOWLEDGEMENT

ON THIS 15th DAY OF JANUARY, 2014, BEFORE ME, THE UNDERSIGNED, A NOTARY PUBLIC IN AND FOR THE STATE OF WASHINGTON, PERSONALLY APPEARED _____, PRESIDENT AND CEO OF PEOPLES BANK, RESPECTFULLY, OF _____, WASHINGTON, WHO KNOWS THE CONTENTS OF THE FOREGOING INSTRUMENT, AND ACKNOWLEDGED THE SAID INSTRUMENT TO BE HIS VOLUNTARY ACT AND DEED OF SAID CORPORATION, FOR THE USES AND PURPOSES THEREIN MENTIONED, AND ON OATH STATED THAT HE IS THE PRESIDENT AND CEO OF SAID CORPORATION, AND THAT THE SEAL AFFIXED (IF ANY) IS THE CORPORATE SEAL OF SAID CORPORATION.

WITNESS MY HAND AND OFFICIAL SEAL HERETO AFFIXED THE DAY AND YEAR FIRST ABOVE WRITTEN.

NOTARY PUBLIC IN AND FOR THE STATE OF WASHINGTON
RESIDING AT _____
MY APPOINTMENT EXPIRES _____

DEDICATION

KNOW ALL MEN BY THESE PRESENTS THAT THE PASS, LLC, A WASHINGTON LIMITED LIABILITY COMPANY, THE UNDERSIGNED OWNER IN FEE SHARE OF THE HEREIN DESCRIBED REAL PROPERTY, DOES HEREBY DECLINE, SUBORDINATE AND PLAY AS HEREIN DESCRIBED. IN WITNESS WHEREOF, WE HAVE SET OUR HANDS THIS 15th DAY OF JANUARY, 2014.

NAME: The Pass, LLC
TITLE: Owner



ACKNOWLEDGEMENT

ON THIS 15th DAY OF JANUARY, 2014, BEFORE ME, THE UNDERSIGNED, A NOTARY PUBLIC IN AND FOR THE STATE OF WASHINGTON, PERSONALLY APPEARED _____, PRESIDENT AND CEO OF THE PASS, LLC, RESPECTFULLY, OF _____, WASHINGTON, WHO KNOWS THE CONTENTS OF THE FOREGOING INSTRUMENT, AND ACKNOWLEDGED THE SAID INSTRUMENT TO BE HIS VOLUNTARY ACT AND DEED OF SAID LIMITED LIABILITY COMPANY, FOR THE USES AND PURPOSES THEREIN MENTIONED, AND ON OATH STATED THAT HE IS THE PRESIDENT AND CEO OF SAID COMPANY, AND THAT THE SEAL AFFIXED (IF ANY) IS THE CORPORATE SEAL OF SAID COMPANY.

WITNESS MY HAND AND OFFICIAL SEAL HERETO AFFIXED THE DAY AND YEAR FIRST ABOVE WRITTEN.

NOTARY PUBLIC IN AND FOR THE STATE OF WASHINGTON
RESIDING AT _____
MY APPOINTMENT EXPIRES _____

ADJACENT OWNERS

- 272138 301436 SNOQUALMIE SUMMIT INN INC
PO BOX 1140
EDMUNDS WA 98020
- 112335 022335 TROPICAN PROPERTIES LLC
1002 HANFORD RD
SEATTLE WA 98107
- 942138 112335 11 STATION ETUX
1002 HANFORD RD
ALBURN VA 98002
- 020134 ALICE M REED
PO BOX 694
NIRKLAND WA 98093-0894
- 922136 KENY C HALLS ETUX
PO BOX 178
SNOQUALMIE WA 98088
- 642336 GREGORY THORNGOLD
SNOQUALMIE PASS WA 98086
- 222336 TRACY CAMPBELL ETUX
20701 NE 7951 Pk
DUNN WA 98019
- 912336 SCOTT T FISHER ETUX
3409 198TH AVE CRT E
LAKE WALES WA 98281
- 632336 DANIELA M
SNOQUALMIE PASS WA 98086
- 922336 TROYA TON ETUX TRUSTEES
2117 E BEAVER AVE N SE
SAMMAMISH WA 98075
- 112436 WICKY
61 GIVE PEAK LAKE
SNOQUALMIE PASS WA 98066
- 162436 JAMES S SURELY
PO BOX 46450
ARVADO CO 80006
- 132436 JIM PRITCHARD
DOLLY C WARDENALL
PO BOX 1500
SNOQUALMIE WA 98088
- 944336 ROCK 88000 LTD
PO BOX 696
MERCER ISLAND WA 98040-0836
- 103436 SCOTT S GIBSON
6901 63RD AVE SE
MERCER ISLAND WA 98040
- 362336 JOSEPH CONSOLANT ETUX
61 GIVE PEAK LAKE
SNOQUALMIE PASS WA 98068
- 372336 ANDREW R SCHWAB ETUX
501 NORTH AVE NE #411
SEATTLE WA 98109
- 362336 JIM PRITCHARD ETUX
61 GIVE PEAK LAKE
SNOQUALMIE WA 98068
- 392336 SCOTT A HAYDOCK ETUX
SHAWN CLOTWORTH
6700 AZALEA WAY SE
SNOQUALMIE WA 98086
- 402336 TRACY CAMPBELL ETUX
20701 NE 7951 Pk
DUNN WA 98019
- 412336 GARY L STEINER ETUX
PUDALUP WA 98371
- 957283 957282 957281 957280 957279 957278 957277 957276 957275 957274 957273 957272 957271 957270 957269 957268 957267 957266 957265 957264 957263 957262 957261 957260 957259 957258 957257 957256 957255 957254 957253 957252 957251 957250 957249 957248 957247 957246 957245 957244 957243 957242 957241 957240 957239 957238 957237 957236 957235 957234 957233 957232 957231 957230 957229 957228 957227 957226 957225 957224 957223 957222 957221 957220 957219 957218 957217 957216 957215 957214 957213 957212 957211 957210 957209 957208 957207 957206 957205 957204 957203 957202 957201 957200 957199 957198 957197 957196 957195 957194 957193 957192 957191 957190 957189 957188 957187 957186 957185 957184 957183 957182 957181 957180 957179 957178 957177 957176 957175 957174 957173 957172 957171 957170 957169 957168 957167 957166 957165 957164 957163 957162 957161 957160 957159 957158 957157 957156 957155 957154 957153 957152 957151 957150 957149 957148 957147 957146 957145 957144 957143 957142 957141 957140 957139 957138 957137 957136 957135 957134 957133 957132 957131 957130 957129 957128 957127 957126 957125 957124 957123 957122 957121 957120 957119 957118 957117 957116 957115 957114 957113 957112 957111 957110 957109 957108 957107 957106 957105 957104 957103 957102 957101 957100 957099 957098 957097 957096 957095 957094 957093 957092 957091 957090 957089 957088 957087 957086 957085 957084 957083 957082 957081 957080 957079 957078 957077 957076 957075 957074 957073 957072 957071 957070 957069 957068 957067 957066 957065 957064 957063 957062 957061 957060 957059 957058 957057 957056 957055 957054 957053 957052 957051 957050 957049 957048 957047 957046 957045 957044 957043 957042 957041 957040 957039 957038 957037 957036 957035 957034 957033 957032 957031 957030 957029 957028 957027 957026 957025 957024 957023 957022 957021 957020 957019 957018 957017 957016 957015 957014 957013 957012 957011 957010 957009 957008 957007 957006 957005 957004 957003 957002 957001 957000 956999 956998 956997 956996 956995 956994 956993 956992 956991 956990 956989 956988 956987 956986 956985 956984 956983 956982 956981 956980 956979 956978 956977 956976 956975 956974 956973 956972 956971 956970 956969 956968 956967 956966 956965 956964 956963 956962 956961 956960 956959 956958 956957 956956 956955 956954 956953 956952 956951 956950 956949 956948 956947 956946 956945 956944 956943 956942 956941 956940 956939 956938 956937 956936 956935 956934 956933 956932 956931 956930 956929 956928 956927 956926 956925 956924 956923 956922 956921 956920 956919 956918 956917 956916 956915 956914 956913 956912 956911 956910 956909 956908 956907 956906 956905 956904 956903 956902 956901 956900 956899 956898 956897 956896 956895 956894 956893 956892 956891 956890 956889 956888 956887 956886 956885 956884 956883 956882 956881 956880 956879 956878 956877 956876 956875 956874 956873 956872 956871 956870 956869 956868 956867 956866 956865 956864 956863 956862 956861 956860 956859 956858 956857 956856 956855 956854 956853 956852 956851 956850 956849 956848 956847 956846 956845 956844 956843 956842 956841 956840 956839 956838 956837 956836 956835 956834 956833 956832 956831 956830 956829 956828 956827 956826 956825 956824 956823 956822 956821 956820 956819 956818 956817 956816 956815 956814 956813 956812 956811 956810 956809 956808 956807 956806 956805 956804 956803 956802 956801 956800 956799 956798 956797 956796 956795 956794 956793 956792 956791 956790 956789 956788 956787 956786 956785 956784 956783 956782 956781 956780 956779 956778 956777 956776 956775 956774 956773 956772 956771 956770 956769 956768 956767 956766 956765 956764 956763 956762 956761 956760 956759 956758 956757 956756 956755 956754 956753 956752 956751 956750 956749 956748 956747 956746 956745 956744 956743 956742 956741 956740 956739 956738 956737 956736 956735 956734 956733 956732 956731 956730 956729 956728 956727 956726 956725 956724 956723 956722 956721 956720 956719 956718 956717 956716 956715 956714 956713 956712 956711 956710 956709 956708 956707 956706 956705 956704 956703 956702 956701 956700 956699 956698 956697 956696 956695 956694 956693 956692 956691 956690 956689 956688 956687 956686 956685 956684 956683 956682 956681 956680 956679 956678 956677 956676 956675 956674 956673 956672 956671 956670 956669 956668 956667 956666 956665 956664 956663 956662 956661 956660 956659 956658 956657 956656 956655 956654 956653 956652 956651 956650 956649 956648 956647 956646 956645 956644 956643 956642 956641 956640 956639 956638 956637 956636 956635 956634 956633 956632 956631 956630 956629 956628 956627 956626 956625 956624 956623 956622 956621 956620 956619 956618 956617 956616 956615 956614 956613 956612 956611 956610 956609 956608 956607 956606 956605 956604 956603 956602 956601 956600 956599 956598 956597 956596 956595 956594 956593 956592 956591 956590 956589 956588 956587 956586 956585 956584 956583 956582 956581 956580 956579 956578 956577 956576 956575 956574 956573 956572 956571 956570 956569 956568 956567 956566 956565 956564 956563 956562 956561 956560 956559 956558 956557 956556 956555 956554 956553 956552 956551 956550 956549 956548 956547 956546 956545 956544 956543 956542 956541 956540 956539 956538 956537 956536 956535 956534 956533 956532 956531 956530 956529 956528 956527 956526 956525 956524 956523 956522 956521 956520 956519 956518 956517 956516 956515 956514 956513 956512 956511 956510 956509 956508 956507 956506 956505 956504 956503 956502 956501 956500 956499 956498 956497 956496 956495 956494 956493 956492 956491 956490 956489 956488 956487 956486 956485 956484 956483 956482 956481 956480 956479 956478 956477 956476 956475 956474 956473 956472 956471 956470 956469 956468 956467 956466 956465 956464 956463 956462 956461 956460 956459 956458 956457 956456 956455 956454 956453 956452 956451 956450 956449 956448 956447 956446 956445 956444 956443 956442 956441 956440 956439 956438 956437 956436 956435 956434 956433 956432 956431 956430 956429 956428 956427 956426 956425 956424 956423 956422 956421 956420 956419 956418 956417 956416 956415 956414 956413 956412 956411 956410 956409 956408 956407 956406 956405 956404 956403 956402 956401 956400 956399 956398 956397 956396 956395 956394 956393 956392 956391 956390 956389 956388 956387 956386 956385 956384 956383 956382 956381 956380 956379 956378 956377 956376 956375 956374 956373 956372 956371 956370 956369 956368 956367 956366 956365 956364 956363 956362 956361 956360 956359 956358 956357 956356 956355 956354 956353 956352 956351 956350 956349 956348 956347 956346 956345 956344 956343 956342 956341 956340 956339 956338 956337 956336 956335 956334 956333 956332 956331 956330 956329 956328 956327 956326 956325 956324 956323 956322 956321 956320 956319 956318 956317 956316 956315 956314 956313 956312 956311 956310 956309 956308 956307 956306 956305 956304 956303 956302 956301 956300 956299 956298 956297 956296 956295 956294 956293 956292 956291 956290 956289 956288 956287 956286 956285 956284 956283 956282 956281 956280 956279 956278 956277 956276 956275 956274 956273 956272 956271 956270 956269 956268 956267 956266 956265 956264 956263 956262 956261 956260 956259 956258 956257 956256 956255 956254 956253 956252 956251 956250 956249 956248 956247 956246 956245 956244 956243 956242 956241 956240 956239 956238 956237 956236 956235 956234 956233 956232 956231 956230 956229 956228 956227 956226 956225 956224 956223 956222 956221 956220 956219 956218 956217 956216 956215 956214 956213 956212 956211 956210 956209 956208 956207 956206 956205 956204 956203 956202 956201 956200 956199 956198 956197 956196 956195 956194 956193 956192 956191 956190 956189 956188 956187 956186 956185 956184 956183 956182 956181 956180 956179 956178 956177 956176 956175 956174 956173 956172 956171 956170 956169 956168 956167 956166 956165 956164 956163 956162 956161 956160 956159 956158 956157 956156 956155 956154 956153 956152 956151 956150 956149 956148 956147 956146 956145 956144 956143 956142 956141 956140 956139 956138 956137 956136 956135 956134 956133 956132 956131 956130 956129 956128 956127 956126 956125 956124 956123 956122 956121 956120 956119 956118 956117 956116 956115 956114 956113 956112 956111 956110 956109 956108 956107 956106 956105 956104 956103 956102 956101 956100 956099 956098 956097 956096 956095 956094 956093 956092 956091 956090 956089 956088 956087 956086 956085 956084 956083 956082 956081 956080 956079 956078 956077 956076 956075 956074 956073 956072 956071 956070 956069 956068 956067 956066 956065 956064 956063 956062 956061 956060 956059 956058 956057 956056 956055 956054 956053 956052 956051 956050 956049 956048 956047 956046 956045 956044 956043 956042 956041 956040 956039 956038 956037 956036 956035 956034 956033 956032 956031 956030 956029 956028 956027 956026 956025 956024 956023 956022 956021 956020 956019 956018 956017 956016 956015 956014 956013 956012 956011 956010 956009 956008 956007 956006 956005 956004 956003 956002 956001 956000 955999 955998 955997 955996 955995 955994 955993 955992 955991 955990 955989 955988 955987 955986 955985 955984 955983 955982 955981 955980 955979 955978 955977 955976 955975 955974 955973 955972 955971 955970 955969 955968 955967 955966 955965 955964 955963 955962 955961 955960 955959 955958 955957 955956 955955 955954 955953 955952 955951 955950 955949 955948 955947 955946 955945 955944 955943 955942 955941 955940 955939 955938 955937 955936 955935 955934 955933 955932 955931 955930 955929 955928 955927 955926 955925 955924 955923 955922 955921 955920 955919 955918 955917 955916 955915 955914 955913 955912 955911 955910 955909 955908 955907 955906 955905 955904 955903 955902 955901 955900 955899 955898 955897 955896 955895 955894 955893 955892 955891 955890 955889 955888 955887